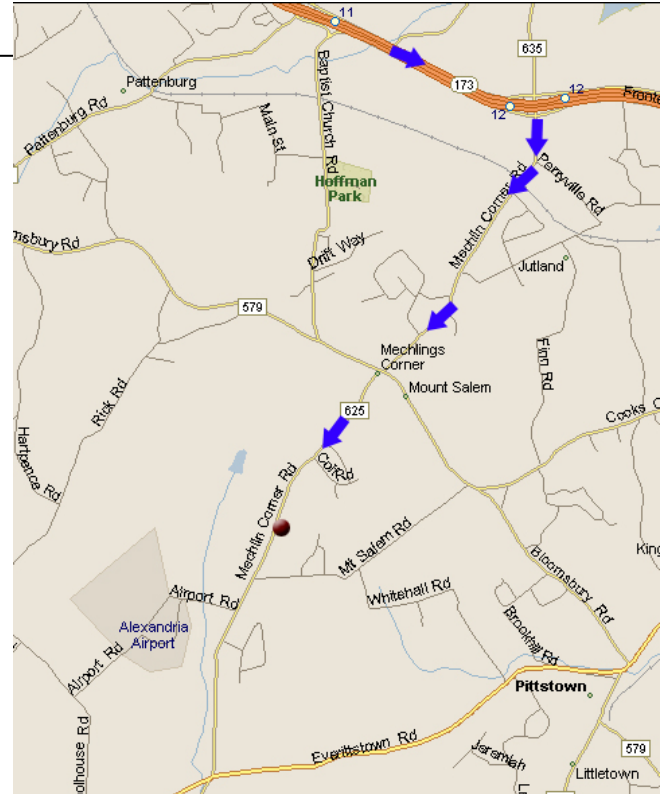


Jean Golden-Tevald, D.O.

Board Certified in Family Practice

416 Mechlin Corner Road
Pittstown, NJ 08867
(908) 735-9344



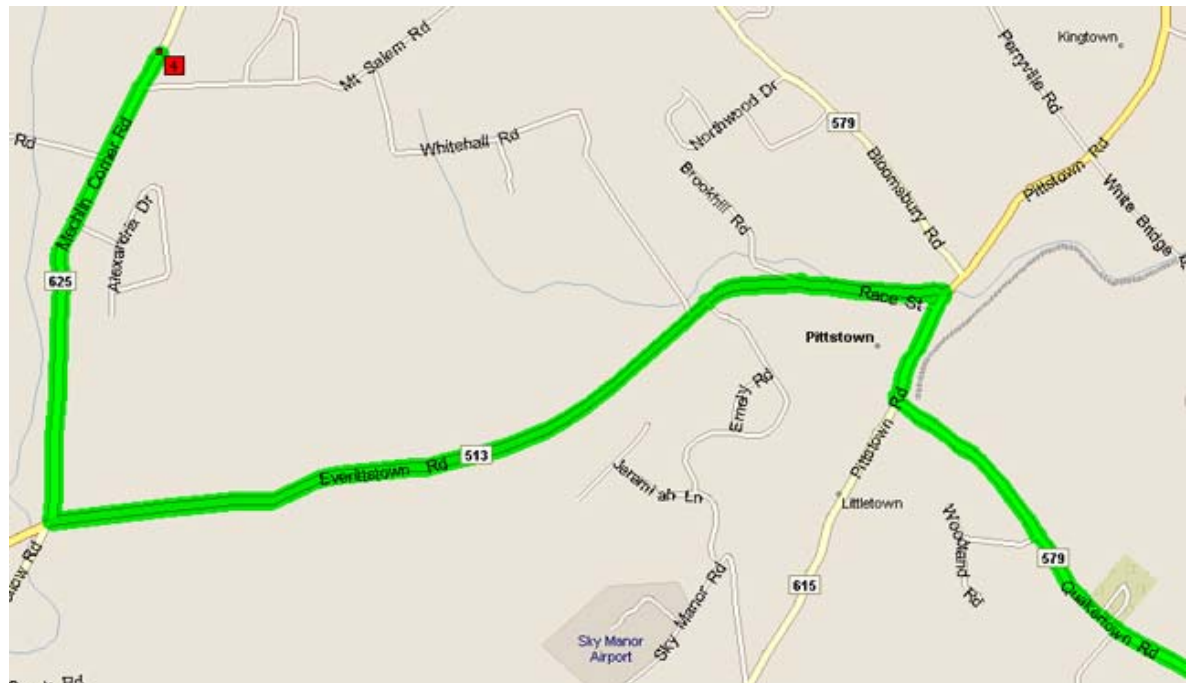
From Easton and points West:

Take Rt. 78 East to Exit 12 (Jutland / Norton). At the end of the ramp, make a Left. At the light, make a Right. Pass the Union Twp School and bear Right at the fork. (Rt. 625). At the top of the hill, the road forms a T intersection with Rt 579. Make a Right and an IMMEDIATE Left, staying on Rt. 625. The office is exactly 1.5 miles on the Left, at the end of the long wooden fence of the farm before us.

From Philadelphia:

Take Rt. 95 North into New Jersey. Take the exit for Rt. 31 North. Take Rt. 31 North all the way to the ramp off to Flemington (Rt 31 becomes a bigger highway), but DO NOT go on the ramp; continue straight and this road is Rt. 579.

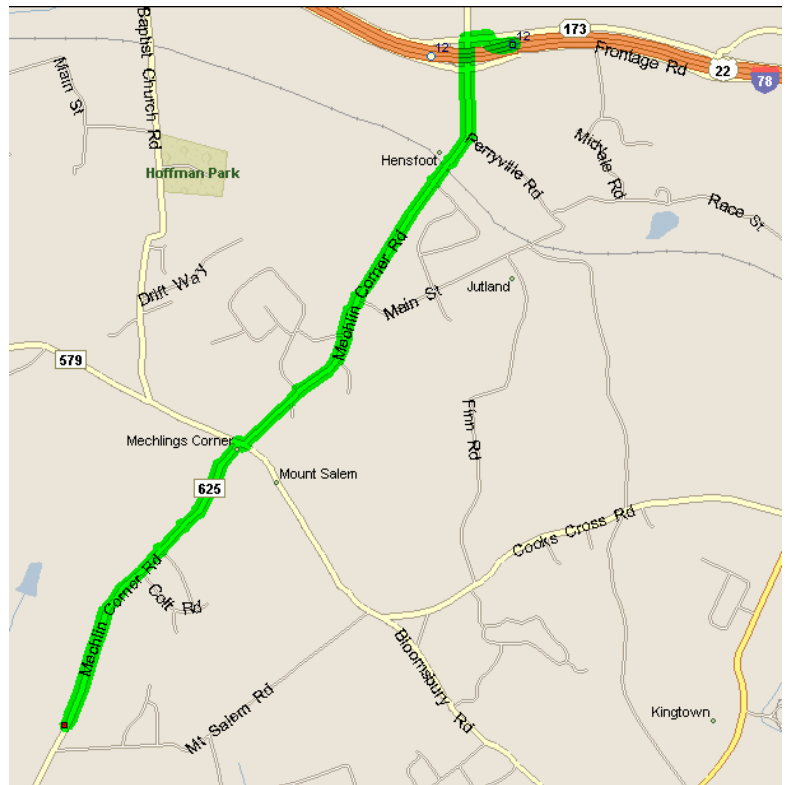
Continue straight, under the highway, and you will come into the little town of Ringoes. Go through the star intersection and bear Left, continuing on Rt.579. At one point, you will come to the top of a hill, to a T intersection. Go Left, then make the first Right (a rather steep hill) and continue on Rt. 579. Take this all the way to the light



at Rt. 12. Go straight through the light, continuing on Rt. 579 to the end. This is Quakertown. Make a Left and continue to the stop sign at a T intersection. This is Pittstown. Make a Right, you will go through the little town of Pittstown. Just past Perricone's Market on the Right, there is a Bank of America. At the Bank, make a Left onto Rt. 513. Go about 2.5 miles and at the end of the black horse fencing; make a Right onto Rt. 625. The office is exactly 1.5 miles on the Right.

From points East:

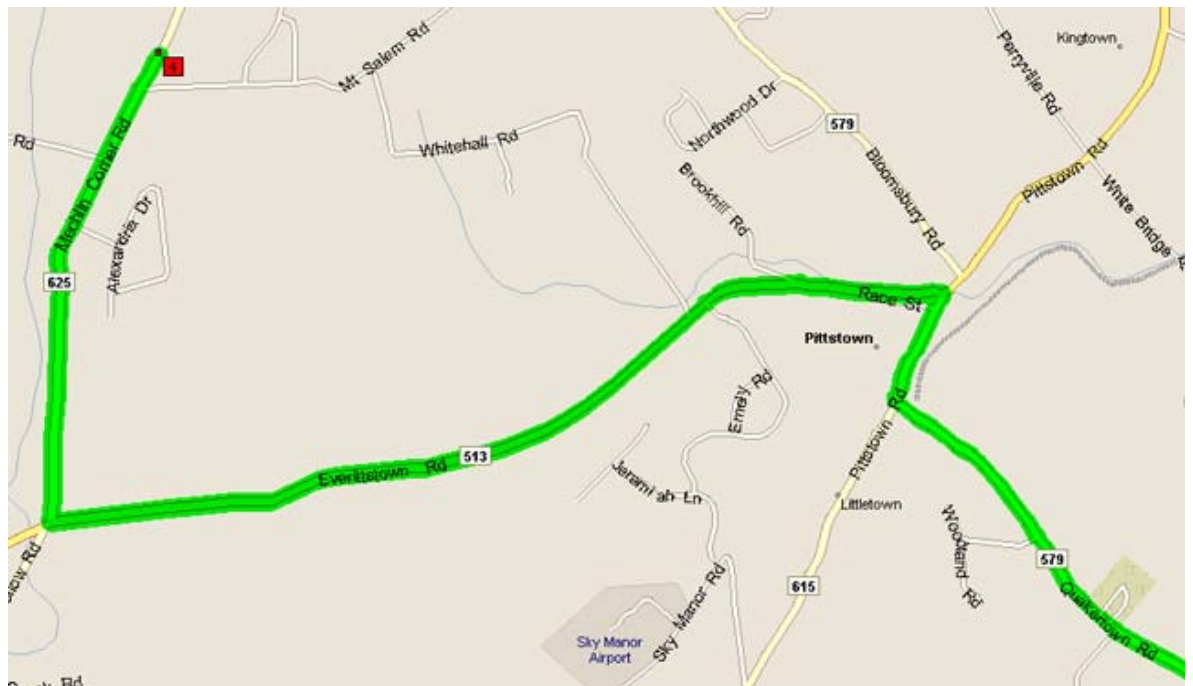
Take Rt 78 West to Exit 12 (Jutland / Norton). At the end of the ramp, make a Left. At the light, make a Left and go over the highway. Go straight through the light, pass the Union Twp School and bear Right at the fork. At the top of the hill, the road forms a T intersection with Rt 579. Make a Right and an IMMEDIATE Left, staying on Rt. 625. The office is exactly 1.5 miles on the Left, at the end of the long wooden fence of the farm before us.



From Buck's county/Rt. 202/New Hope:

Take 202 North across the Delaware River into NJ. Continue north until the Exit for 579 North (Ringoes). Go through the star intersection and bear Left, continuing on Rt.579. At one point, you will come to the top of a hill, to a T

intersection. Go Left, then make the first Right (a rather steep hill) and continue on Rt. 579. Take this all the way to the light at Rt. 12. Go straight through the light, continuing on Rt. 579 to the end. This is Quakertown. Make a Left and continue to the stop sign at a T intersection. This is Pittstown. Make a Right, you will go through the little town of Pittstown. Just past Perricone's



Market on the Right, there is a Bank of America. At the Bank, make a Left onto Rt. 513. Go about 2.5 miles and at the end of the black horse fencing; make a Right onto Rt. 625. The office is exactly 1.5 miles on the Right.

From Bucks County/Upper Black Eddy/Uhlerstown:

Take Rt. 32 to bridge at Frenchtown and cross over into New Jersey. Go straight through the town of Frenchtown, road veers to the left at end of town. At light, go straight, staying on Rt. 513. Go up the hill; stay on 513 for about 4.5 miles. You will pass an intersection with large white church on left, stay straight. Pass two schools on your left, the next road after the 2nd school is Rt. 625. Make a Left onto Rt. 625 and the office is 1.5 miles on the Right.

